

Overview of Postdoctoral Training in Clinical Neuropsychology

Corwin Boake, PhD

University of Texas-Houston Medical School
and
Memorial Hermann-TIRR, Houston, Texas
corwin.boake@uth.tmc.edu

Main topics

- # Houston Conference guidelines
- # What to look for in a residency
- # Nuts & bolts of application & interview
- # National match
- # Survey of 2007 match applicants

Houston Conference guidelines for postdoctoral training

- q Goal is to complete the education and training necessary for independent practice of clinical neuropsychology (CN)
- q Residency is a REQUIRED component in specialty education in CN
- q The equivalent of 2 years of full-time education and training
- q Residency MUST occur on at least a half-time basis
- q ENTRY criteria:
 - 1. Entrance SHOULD be based upon completion an APA/CPA-accredited doctoral program.
 - 2. Residents WILL have successfully completed an APA/CPA-accredited internship which includes SOME training in CN.

Houston Conference guidelines for postdoctoral training

- q EXIT criteria:
 1. Faculty includes a board-certified clinical neuropsychologist and other psychologists.
 2. Training at a fixed site or affiliated local sites with primarily on-site supervision.
 3. Access to clinical services and training in medical specialties and allied professions.
 4. Interactions with residents in medical and allied specialties.
 5. Eligibility for state or provincial licensure for independent practice.
 6. Eligibility for board certification by ABCN.

Preparing for application to postdoctoral programs

- # Doctorate in clinical/counseling/school
- # APA/CPA accreditation of doctoral program and internship
- # Neuropsychology background through practica, employment, coursework, and/or research
- # If no exposure available in doctoral program, supplement with additional supervised practicum, employment, etc.

Preparing for application to postdoctoral programs

- # Involvement in specialty organizations (e.g., APA Div 40, INS, NAN)
- # Need to complete dissertation by start date of residency
- # Use internship to round out general clinical competencies
- # Neuropsychology internship is not necessary and not always helpful
- # Plan applications with advisor or mentor

How to judge program quality

- # Meets Houston conference guidelines
- # Offers a variety of clinical experience
- # Quality supervision and fair evaluation
- # Opportunities for education and research
- # Expected clinical productivity

How to judge program quality

- # Evidence of staff expertise
- # Adequate resources
- # APA accreditation: potential advantage but not required at the postdoctoral level
- # Outcomes of previous residents

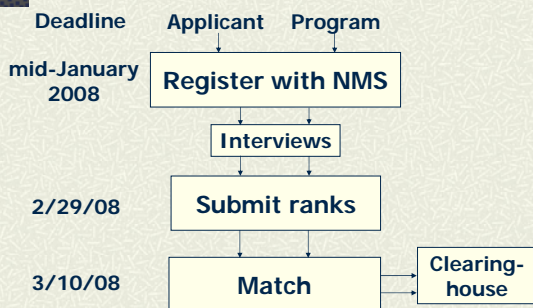
Applying to postdoctoral programs

- # Programs have different application procedures (but simpler than internship)
- # List specific goals in cover letter
- # Attend INS for interviews
- # Speak with former/current trainees
- # Apply to many programs

APPCN membership criteria

- # Duration of 2 years of postdoctoral training, or equivalent on at least a half-time basis
- # Activity at least 50% clinical, 10% didactics, and 10% research
- # Program director is board-certified in clinical neuropsychology by ABCN

National match: timeline



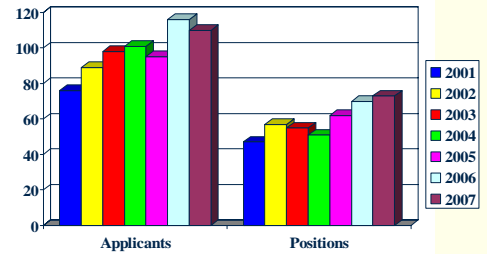
National match: Basic procedures

- # Computerized matching process, run by NMS on behalf of APPCN
- # All programs meeting Houston guidelines may participate
- # Fees for applicants and programs
- # Match assignments are based on applicants' and programs' rankings
- # Match assignments are binding
- # Clearinghouse available after match

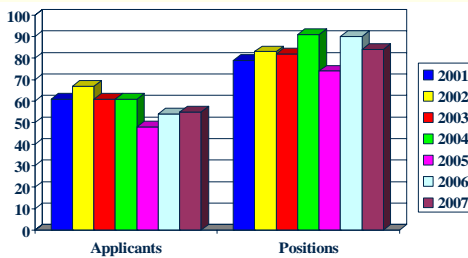
National match: rules for participation

- Program can disclose only if the applicant is competitive and will be ranked
- Premature offers are not allowed
- No limit on number of applications or number of ranks submitted

National match: N of applicants and positions

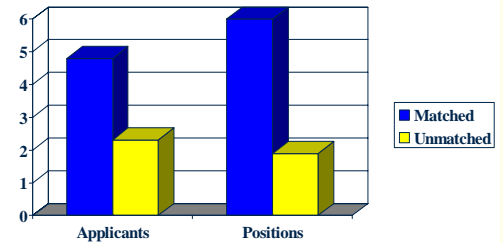


National match: success rates



National match: Relationship of outcome to N of ranks submitted

mean N of ranks (2007)

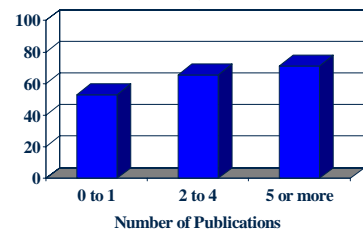


National match survey

- Survey of applicants in 2007 match
- Purpose:
 - Describe match registrants
 - Assess satisfaction with the match
 - What influences match outcome
- The overall match rate for those who responded was 62%

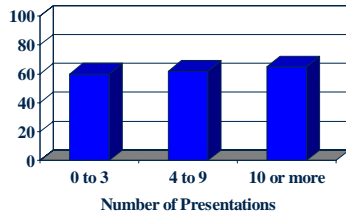
National match survey: Factors that influence match outcome

Match Rate by Publications



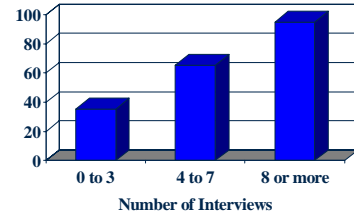
National match survey: Factors that influence match outcome

Match Rate by Presentations



National match survey: Factors that influence match outcome

Match Rate by Interviews



National match survey: Summary

Factors associated with match success:

- Publications
- Number of interviews obtained: for those with 8 or more interviews, match rate was 95%

75% of non-matched applicants reported obtaining a neuropsychology fellowship

National match: Advantages to the applicant

- Access to most quality programs that meet training standards for ABCN
- Procedure is fair to applicants
- Ability to apply to many programs using the same process
- Minimize travel by interviewing at INS
- Match outcome is binding
- Clearinghouse

National match: important links

APPCN: www.appcn.org

NMS: www.natmatch.com/appcnmat/

Conclusions

1. Postdoctoral residency is required for new doctorates to practice in this specialty
2. Competition for residency positions
3. Preparing a competitive application